

# NYC Clear Path Project: Cleaning New York with New Technology

Allen, Tiffany, David and Sofia





# Team



**Allen Rivera**

Park East High School

Interest: Electrical Engineering

Hobbies: Coding, Skateboarding, Playing  
Bass Guitar, and Drawing

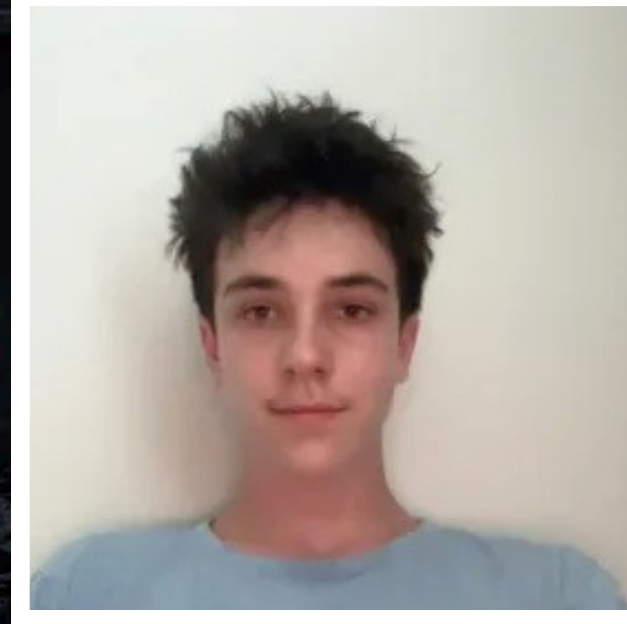


**Tiffany Qu**

Stuyvesant High School

Interest: Engineering & Environmental  
Science

Hobbies: Running, Gardening, Reading,  
Volunteering

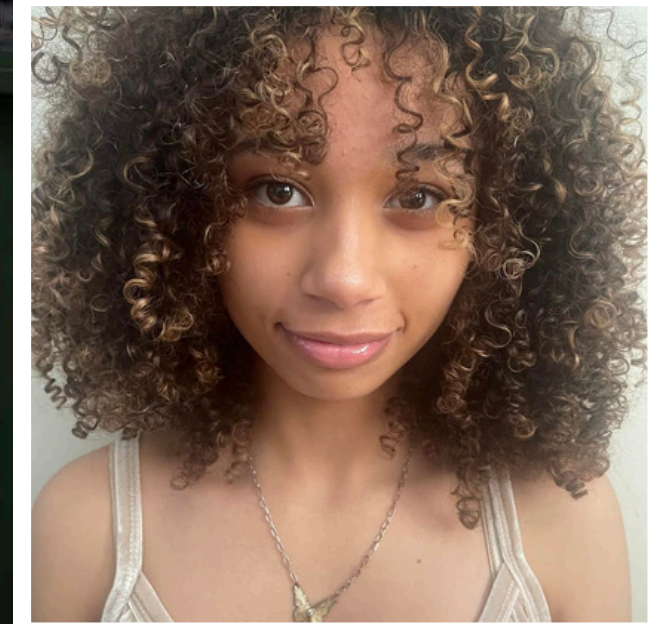


**David Gelpi**

Columbia Secondary School

Interest: Computer Science

Hobbies: Chess, Soccer, Volleyball



**Sofia I. Acevedo**

Bard High School Early College

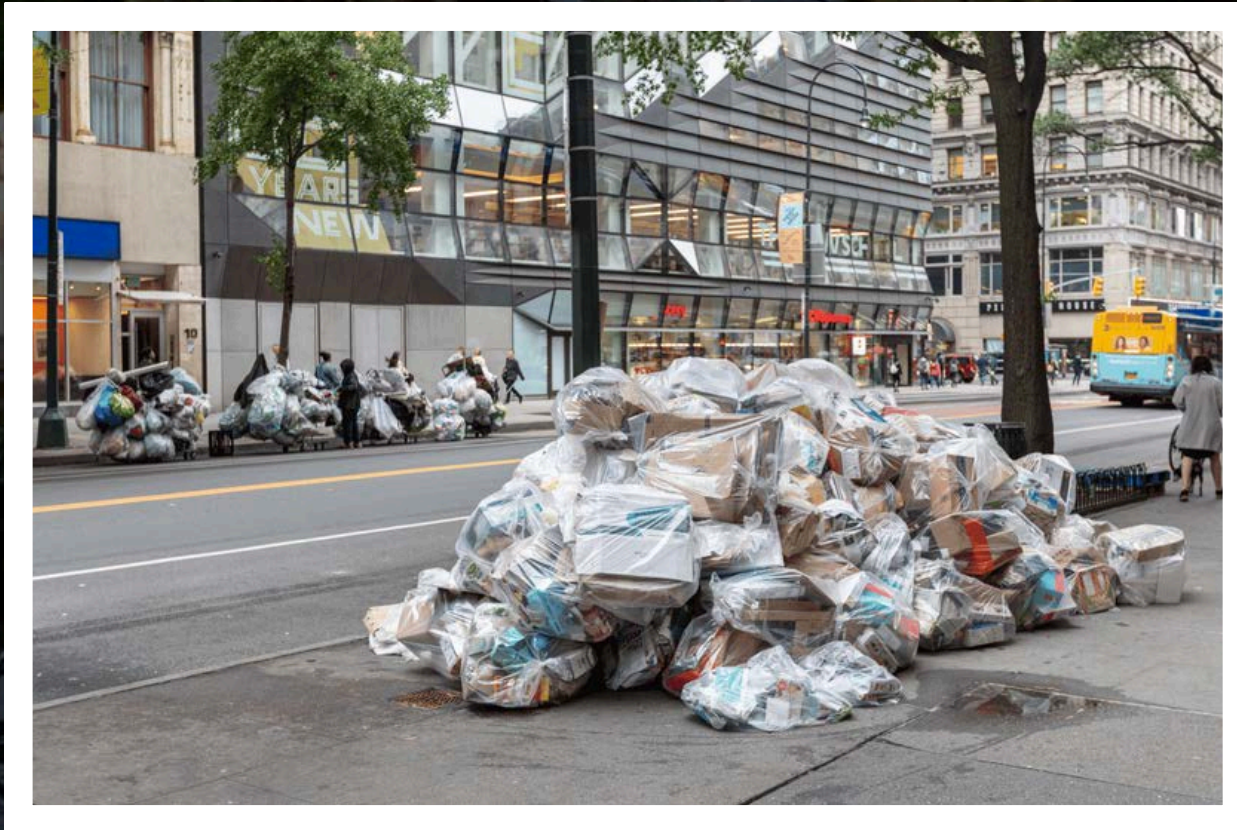
Queens

Interest: Environmental Engineering  
Hobbies: Cooking, Painting, Flag  
Football



# Problem

How many of you have experienced from trash on the streets causing



blockage



overflowing



rodents

**Research Question: How would AI trash detection technology help improve the lives of 125th Harlem community members?**



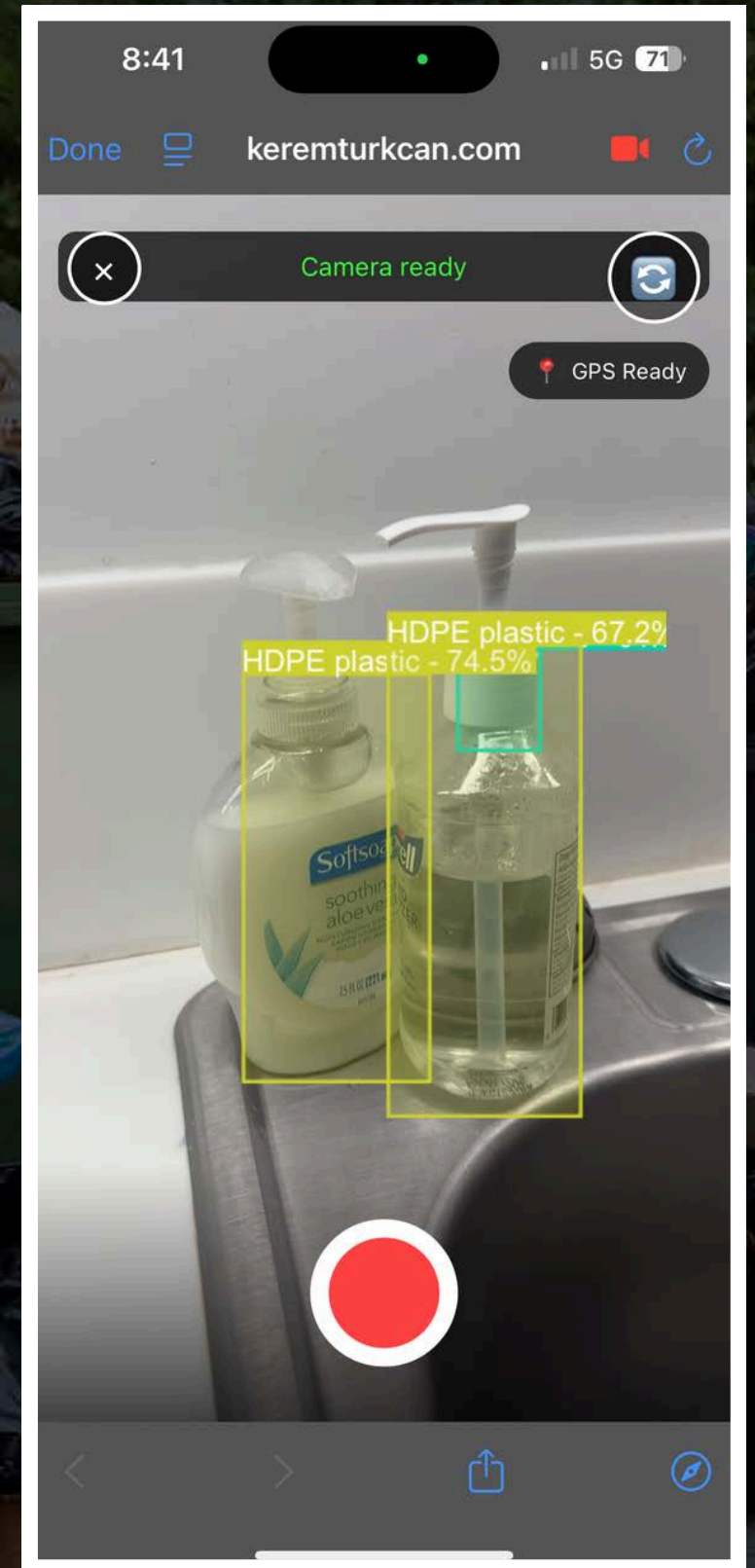
keremturkcan.com

Start NYC ClearPath

# Our Solution

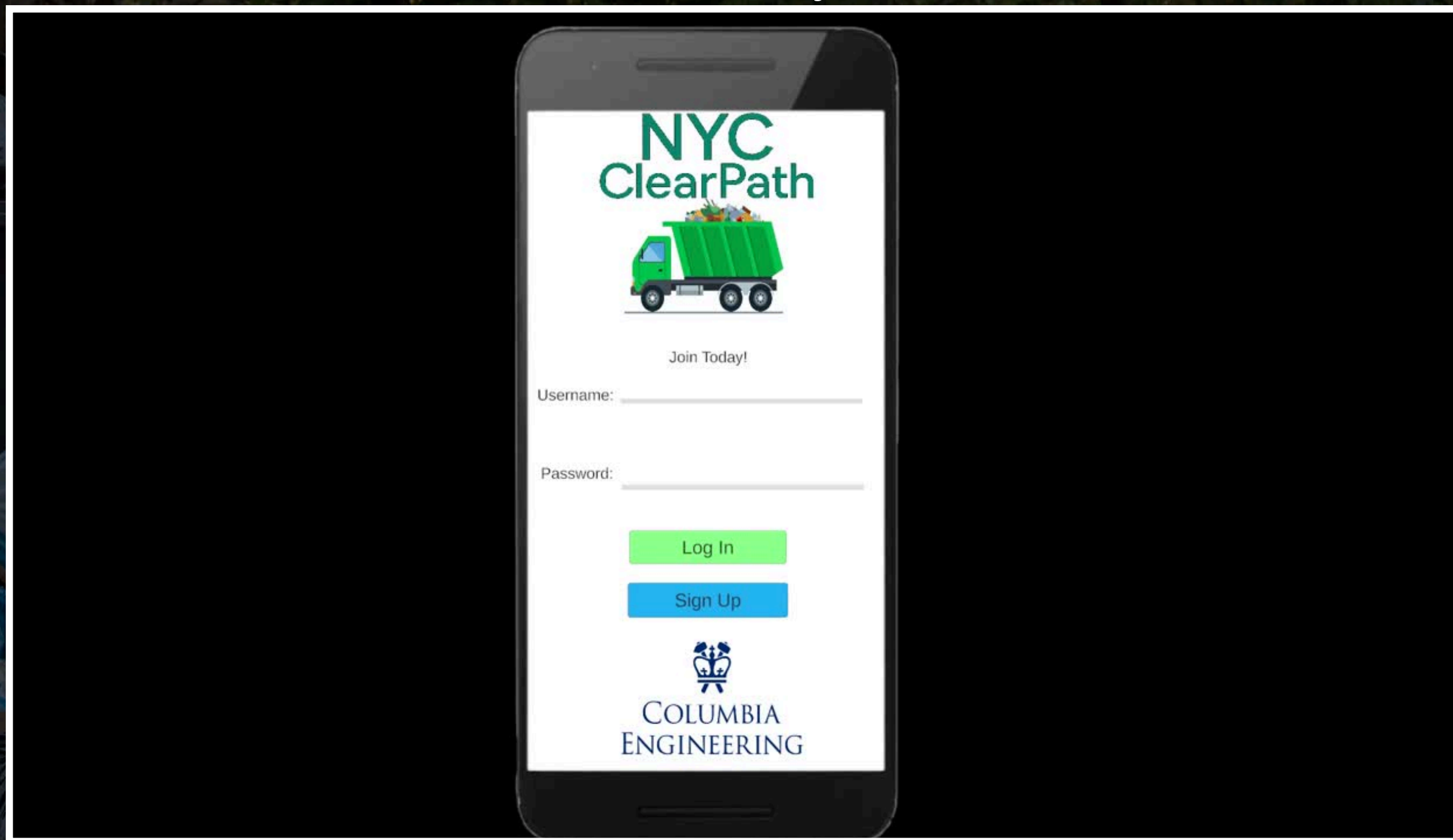
## NYC ClearPath

NYC ClearPath  
primary target group





# Contributions Simulation (coded in Unity C#)





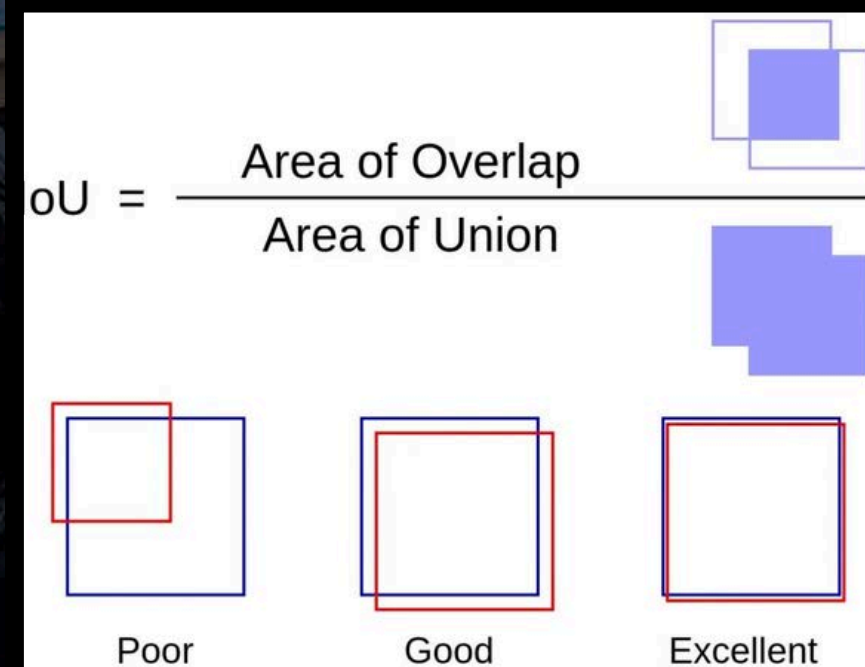
# Why do we need AI in our app?

## Artificial Intelligence (AI)

is the ability of computer models to complete tasks that typically need human intelligence.

## Object Detection

- Detection of object (classification and localization)
- Labels object using bounding box, class labels, and confidence score





Data collection



Data preprocessing



Model selection



Training and validation



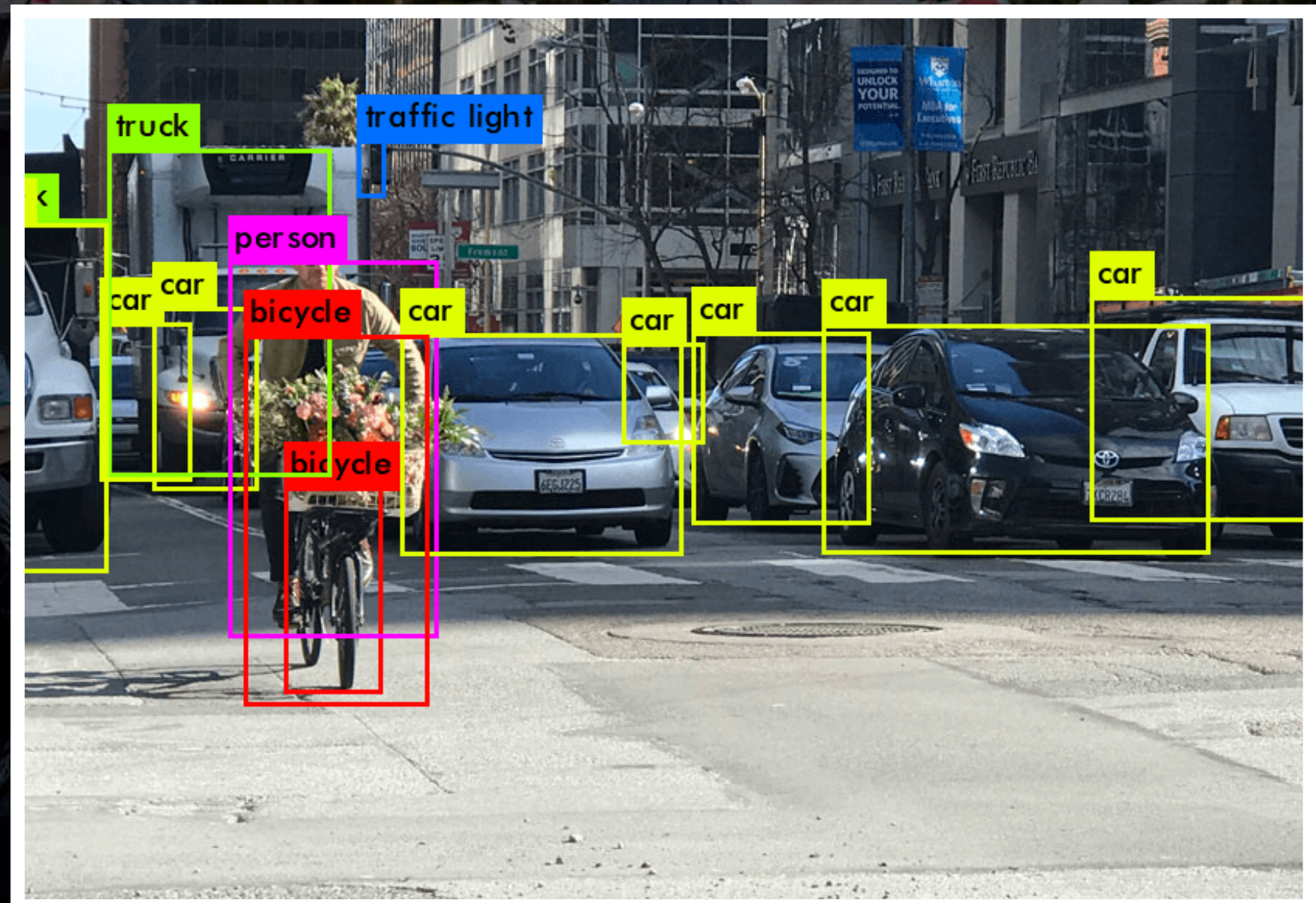
Evaluation



Final model

Good Dataset  
**Variety + Large dataset**  
Pre-process with correct  
annotations

# Object Detection Pipeline





# Pipeline

Data collection



Data preprocessing



Model selection



Training and validation



Evaluation

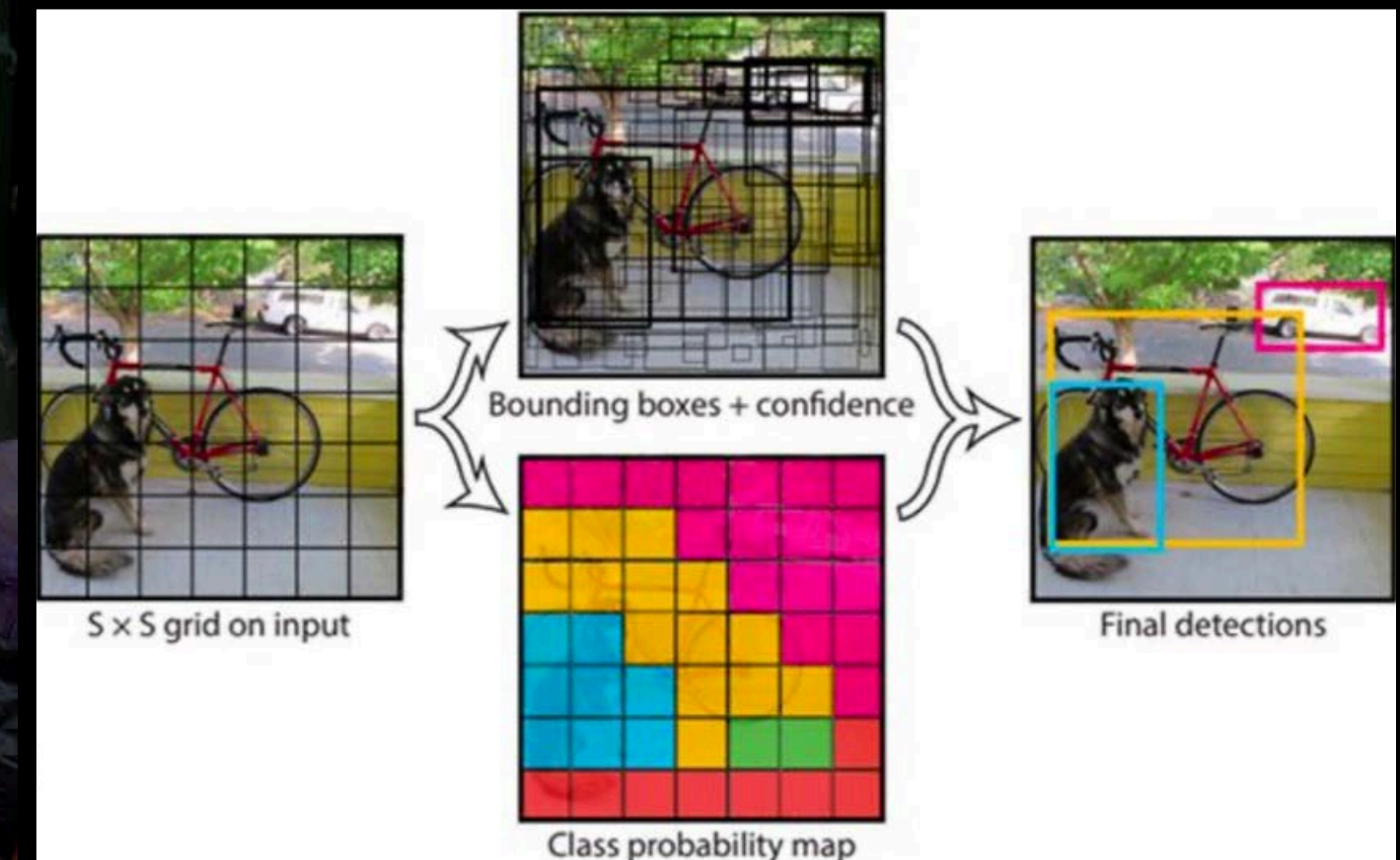


Final model

Model Architecture

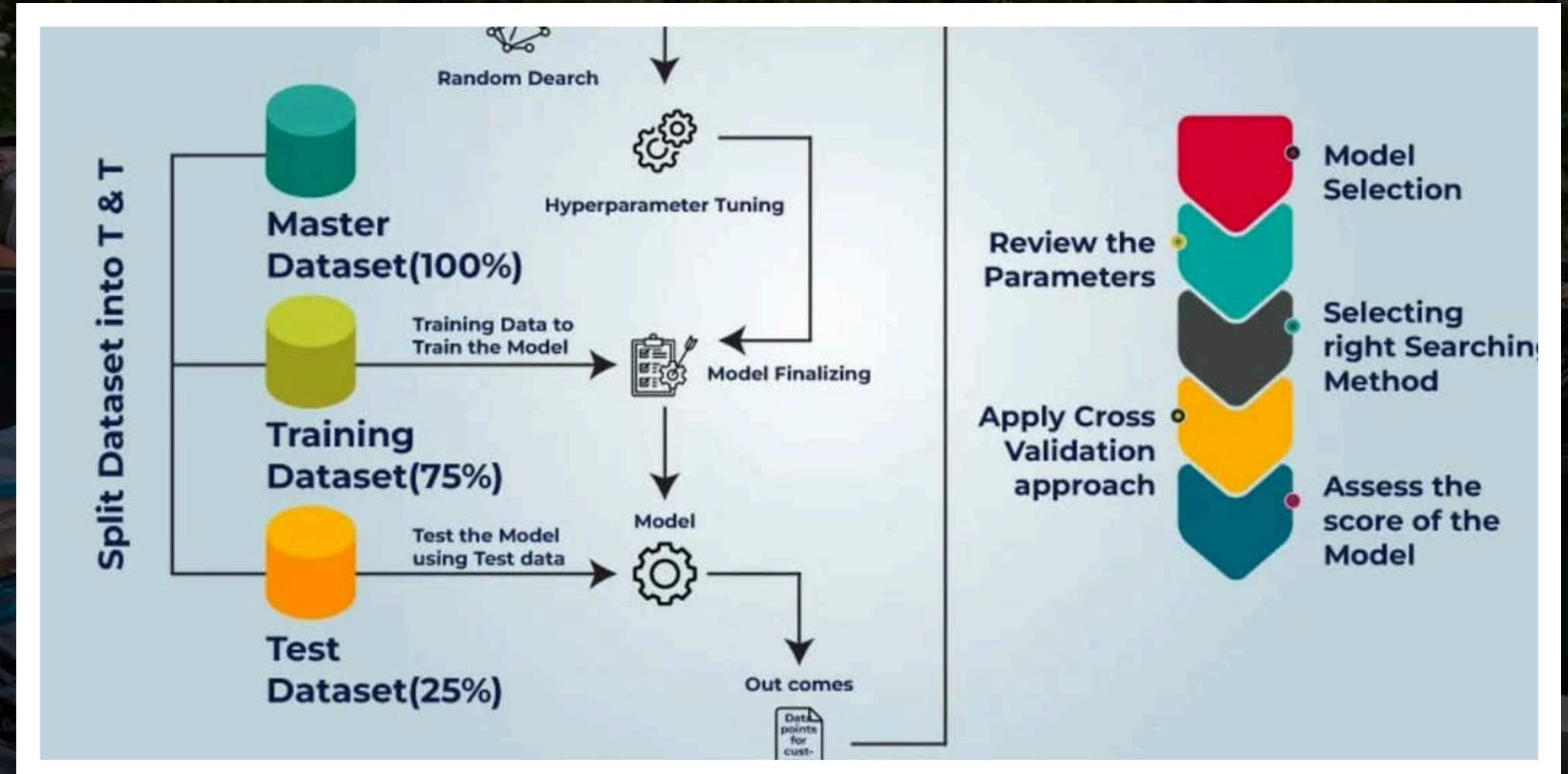
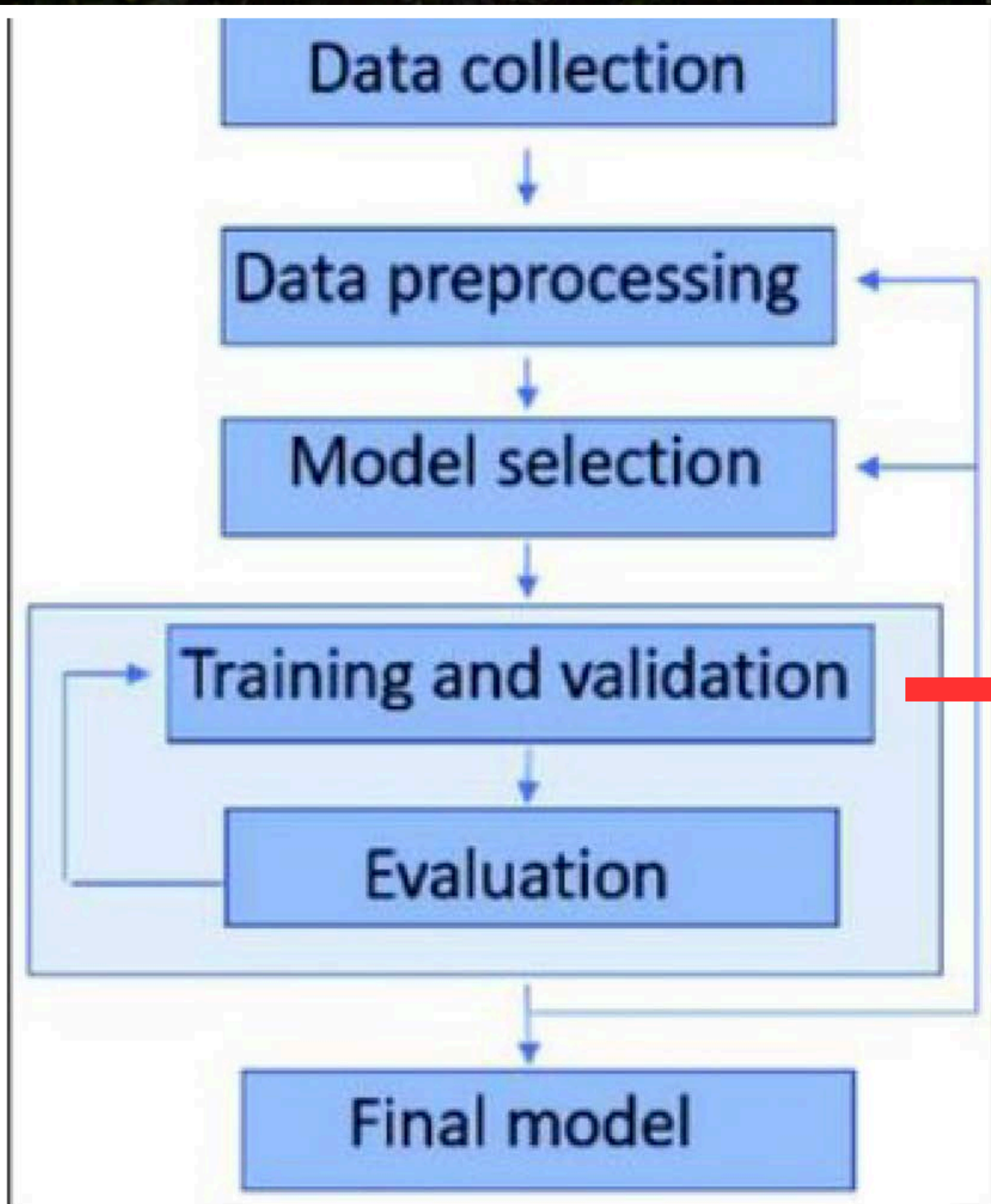
YOLO v8

Layers extracting features  
Embedding



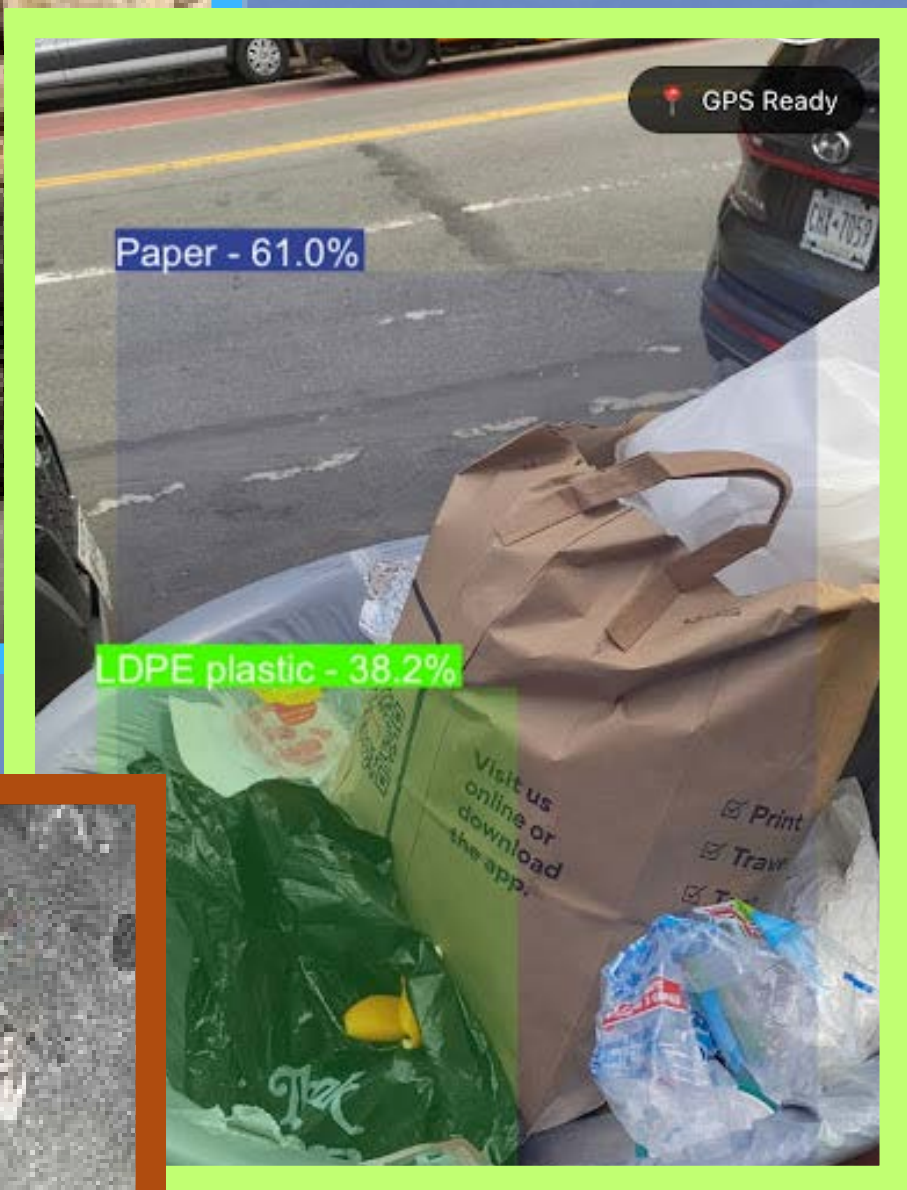
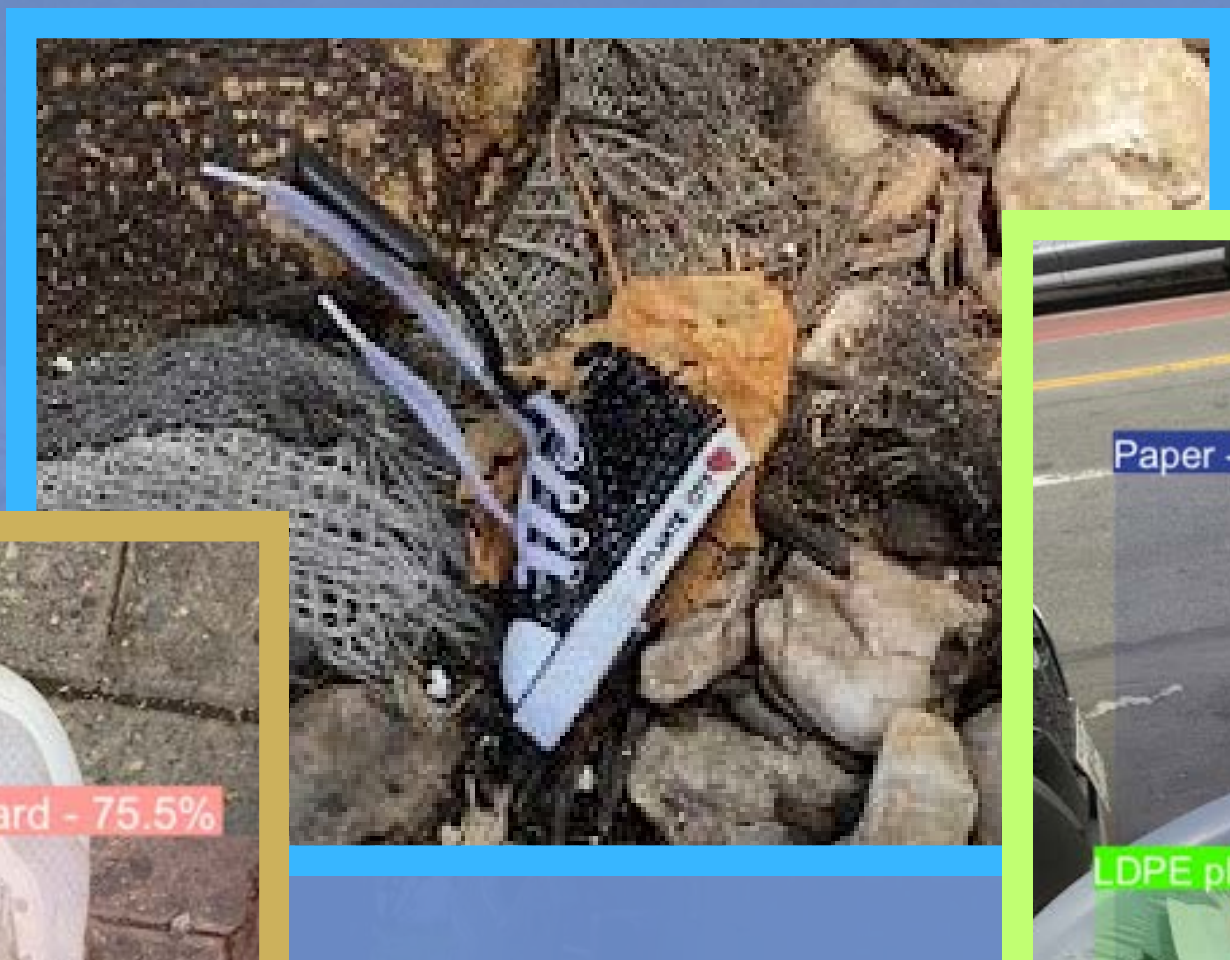
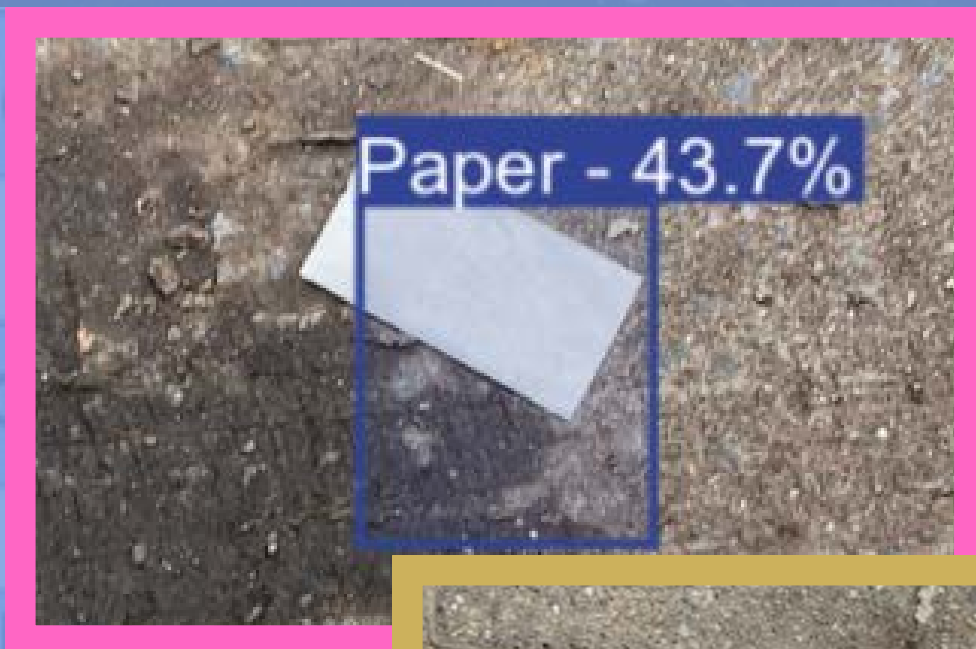
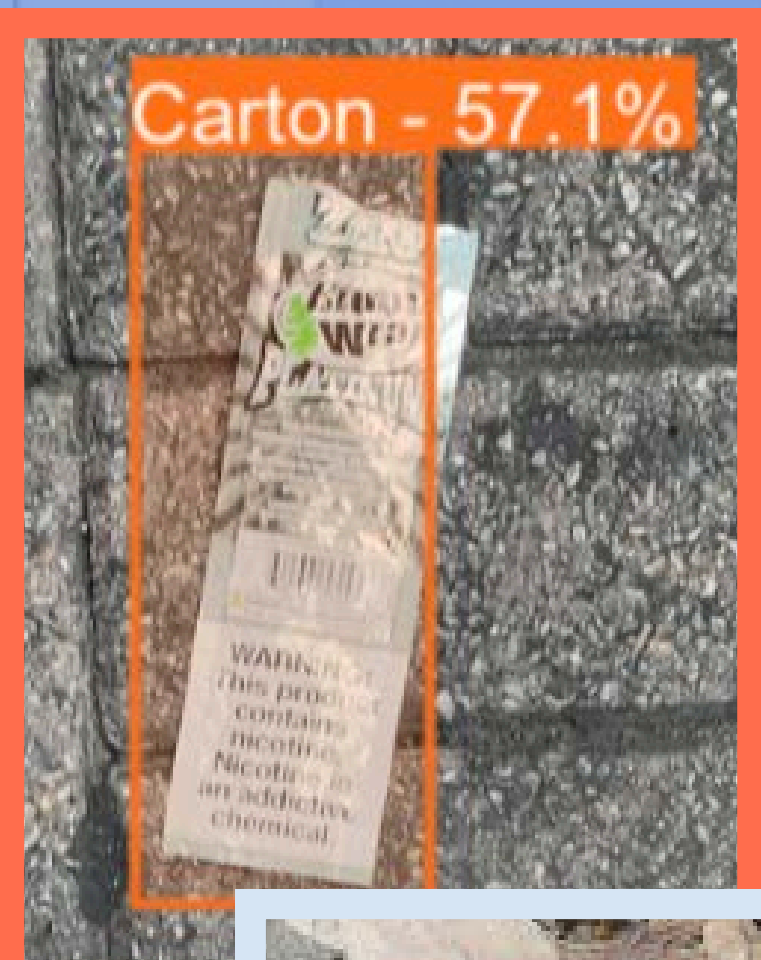


# Pipeline



Supervised Training vs. Unsupervised + Testing  
Parameters - adjustments control how model learns





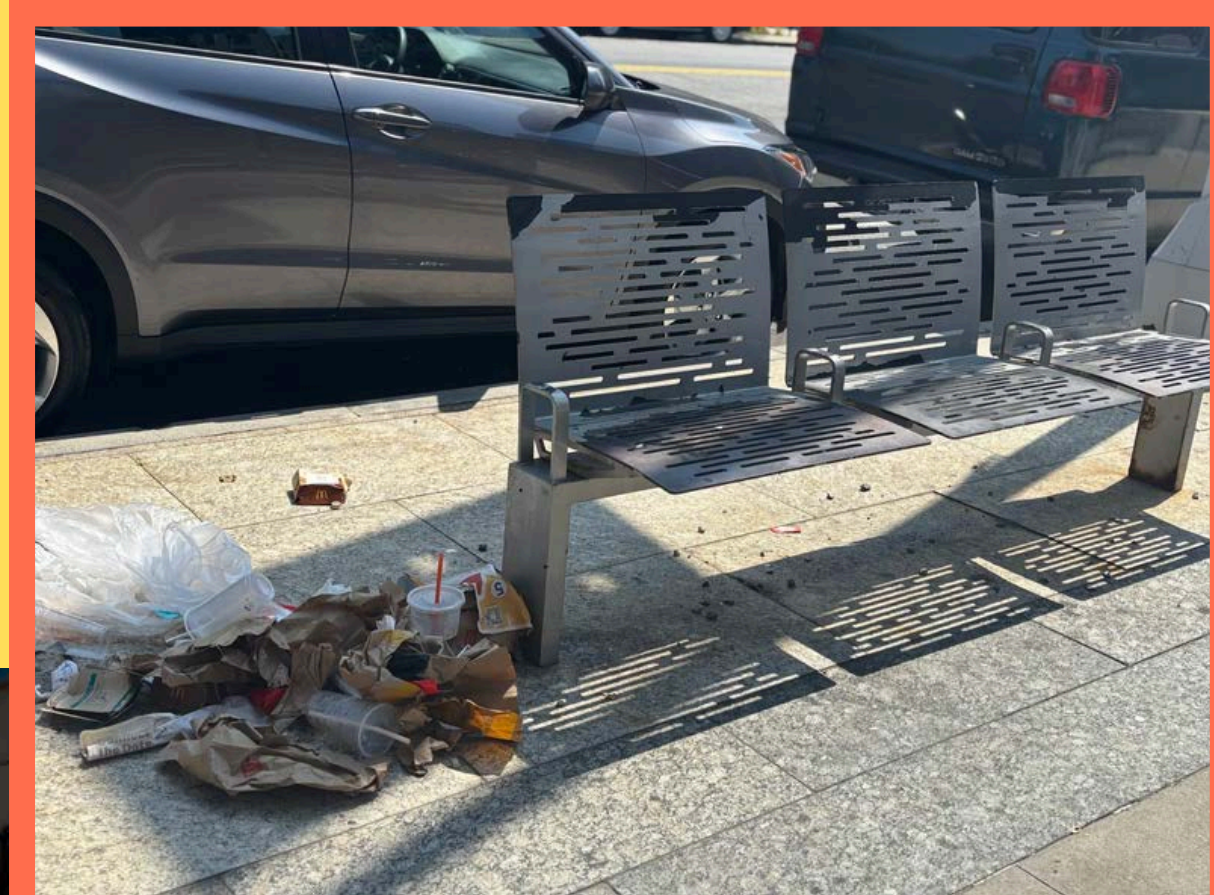


Field Trips

Interviews & Observations

# East Harlem & Central Harlem

- Disconnection
- Nobody Cares
- Substance abuse
- Generational Influence
- Difference in Appearance & Activism





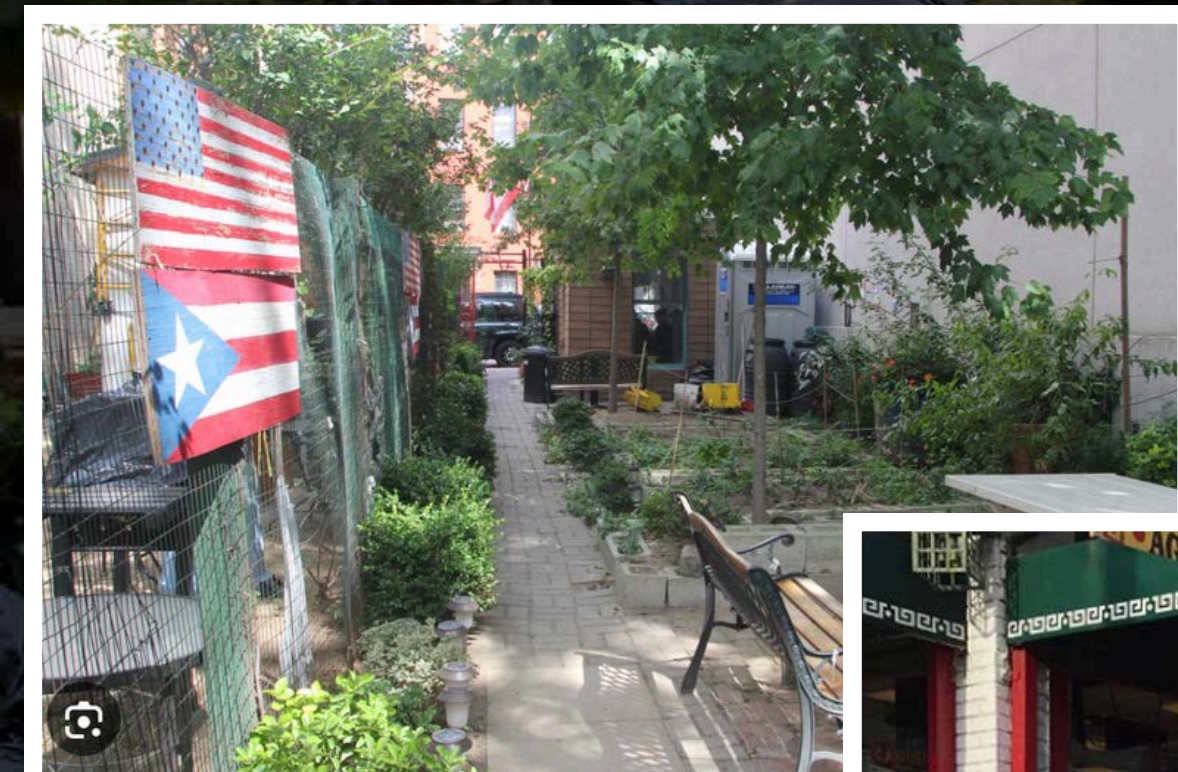
# What does this mean?

Interviews & Observations

Societal vs. Governmental  
problem

Gentrification

Our app relies on the  
community initiative





# Mentors

## Engineering



**Andrew Smyth**  
Professor



**Boshra Khalili**  
PhD Student



**Emma Sombers**  
MS Student

## Social Science



**Jenny Fondren**  
Community coordinator



**Seon Britton**  
PHD Student

## Organizers



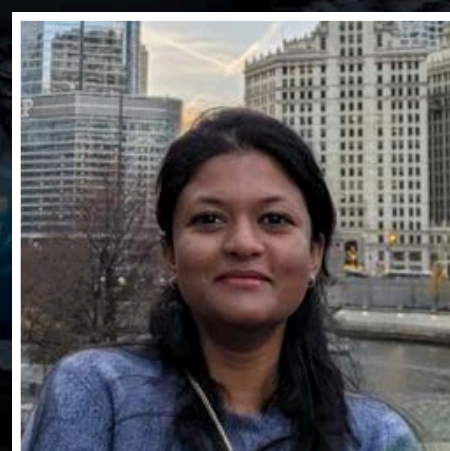
**Fernanda Martinez**



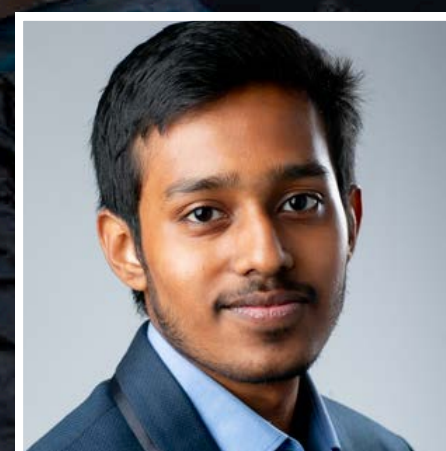
**Trey Greene**



**Zoran Kostic**  
Professor



**Raksha Chandrashekar**  
MS Student



**Pranav Milind Bidve**  
MS Student



Thank you Columbia University!

