



Enhancing Micromobility with Object Detection



Ivy Chen



Anthony Santiago



Lopen Zuo

What is Micromobility?



Electric Bikes

Bikes with battery assisted propulsion.
Limited to 20mph in NYC



Bikes

Good ol' manual powered bikes




Scooters/Escooters

Standard or motorized devices powered by kicking feet



Mopeds

Heavier duty ebikes that go over 20mph. Also includes motorcycles

A stylized map of the San Francisco Bay Area. The landmasses are represented by a solid orange color, while the water bodies (San Francisco Bay, San Pablo Bay, and the Golden Gate) are white. A dense network of black lines represents the road and transit infrastructure. The map includes the San Francisco Peninsula, the East Bay, and the South Bay. The text is positioned on the left side of the map.

How can we use
AI to improve safety
for micromobility users?

How does the
community feel about
possible AI solutions?



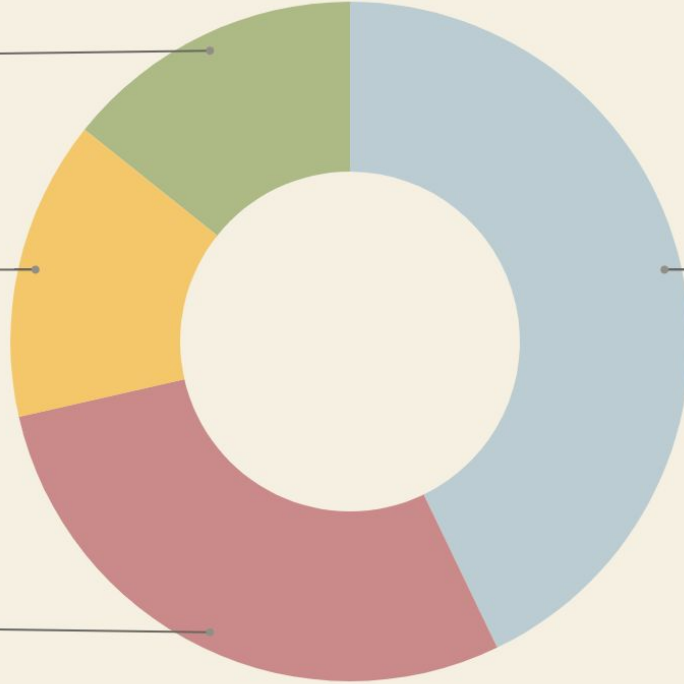
01. Social Science Research

Motorists
14.3%

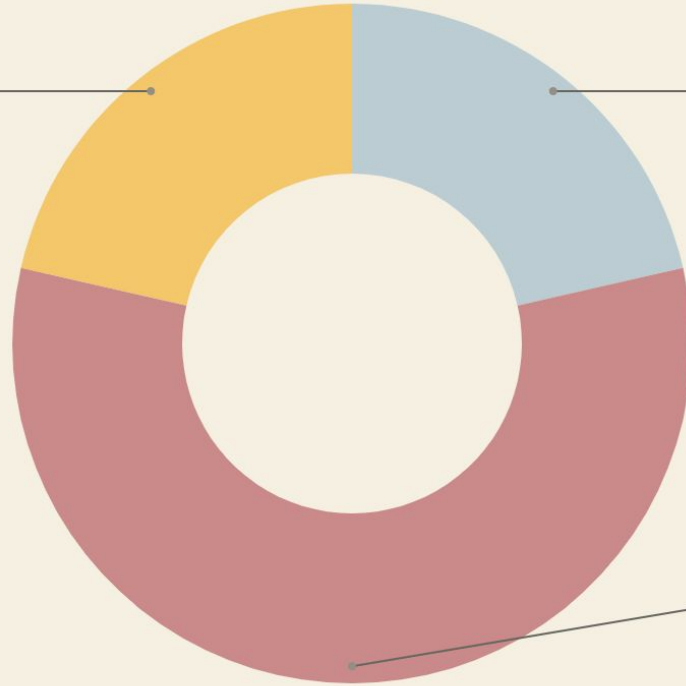
Workers
14.3%

MMB Users
28.6%

Pedestrians
42.9%



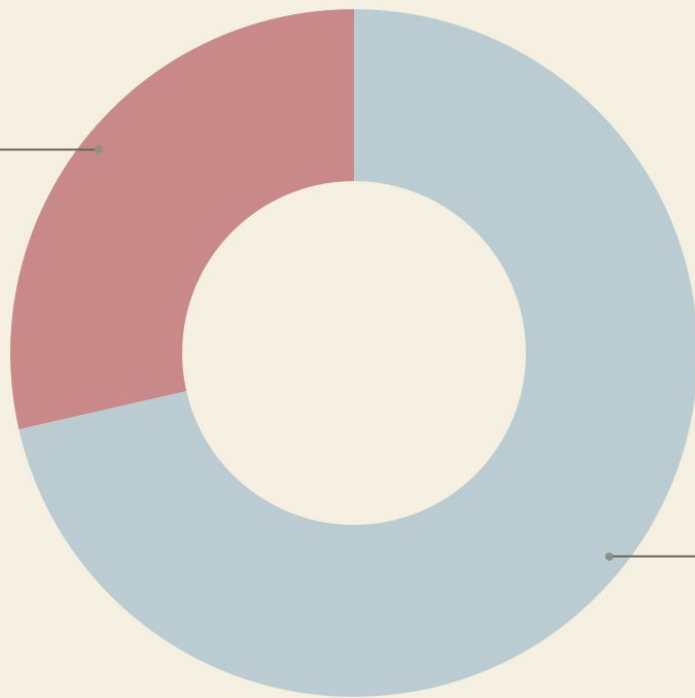
Youth
21.4%



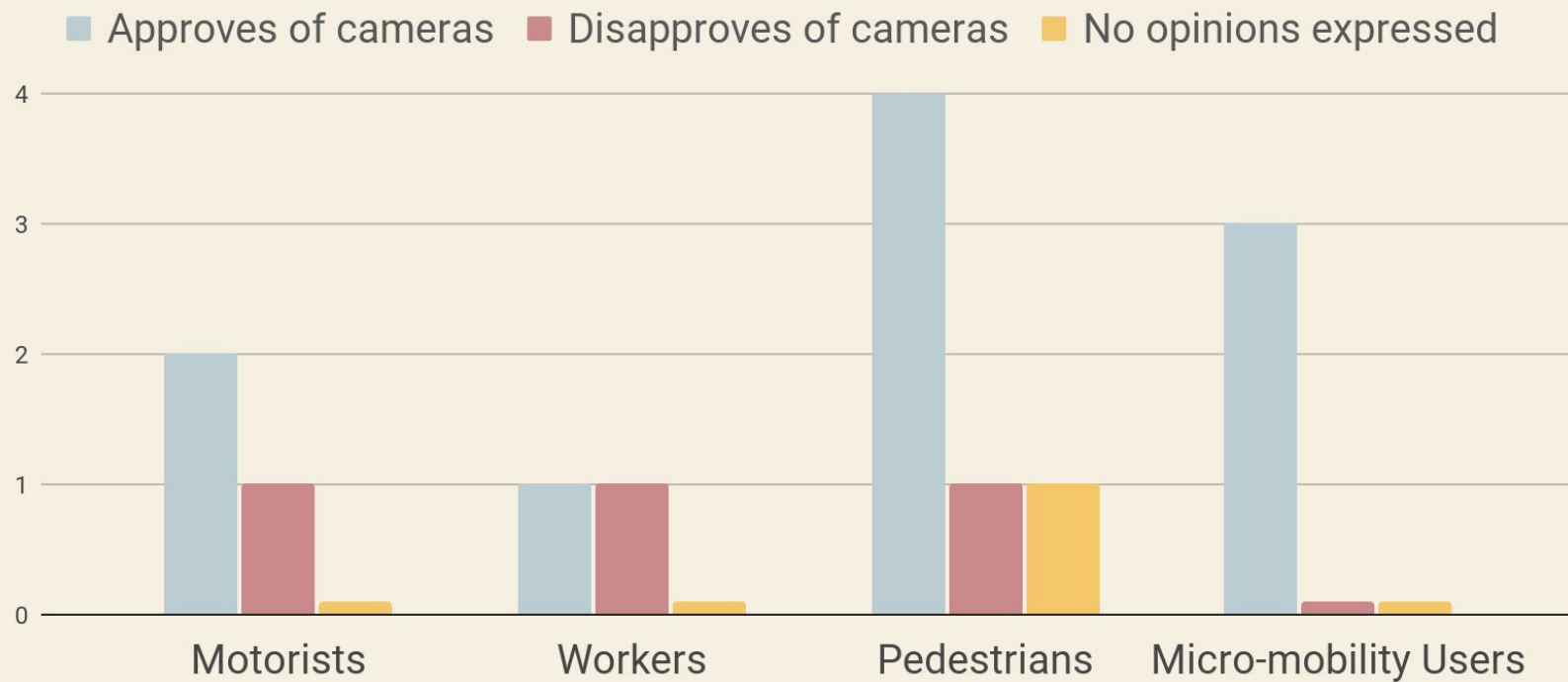
Elderly
21.4%

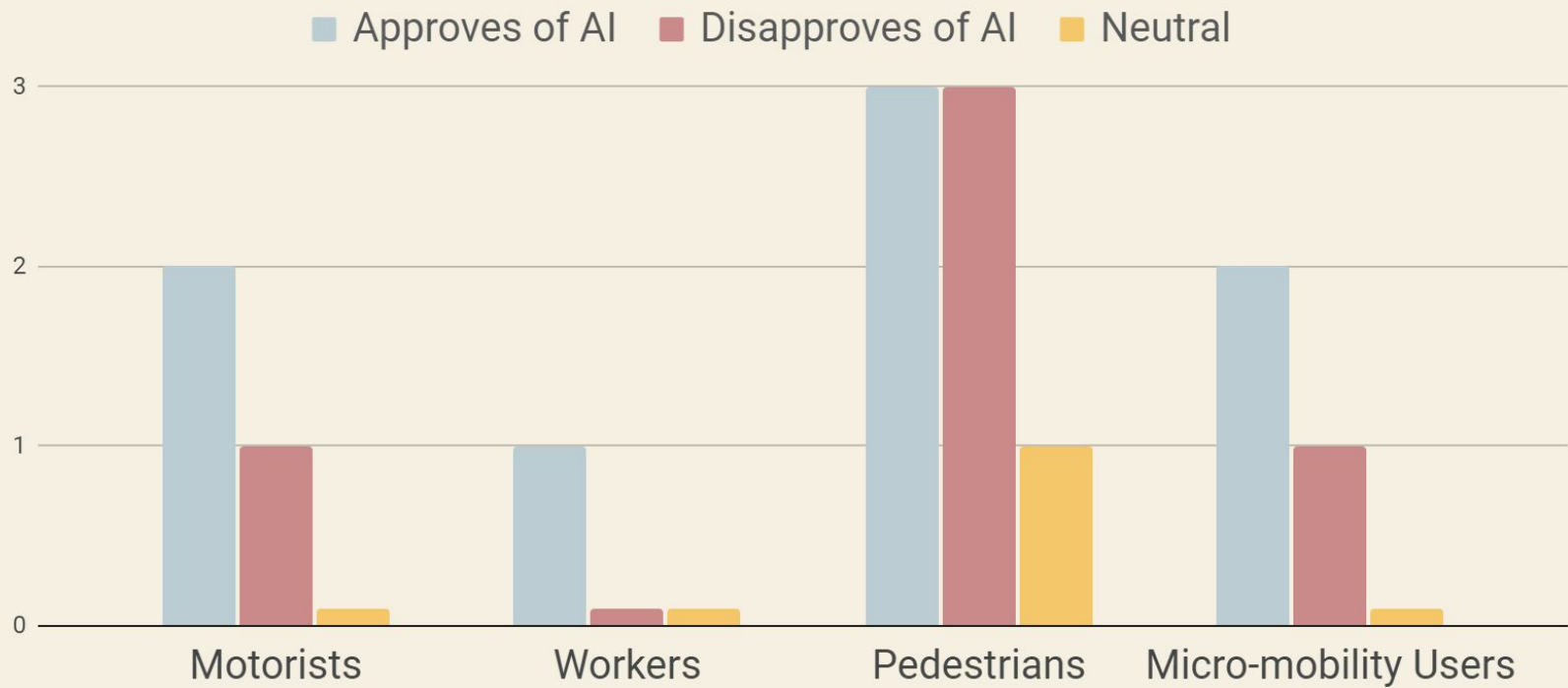
Middle Aged
57.1%

Visitors
28.6%



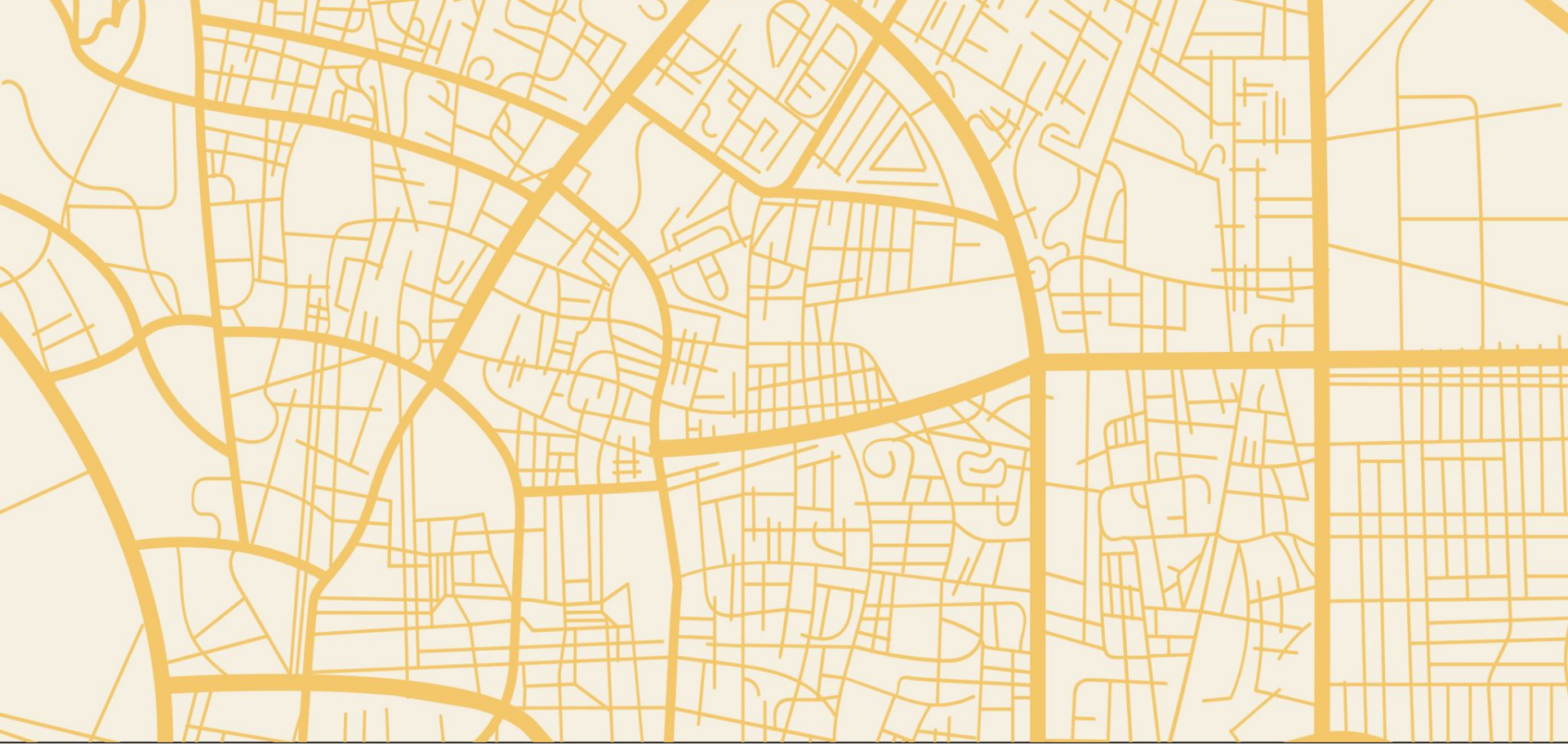
Residents
71.4%









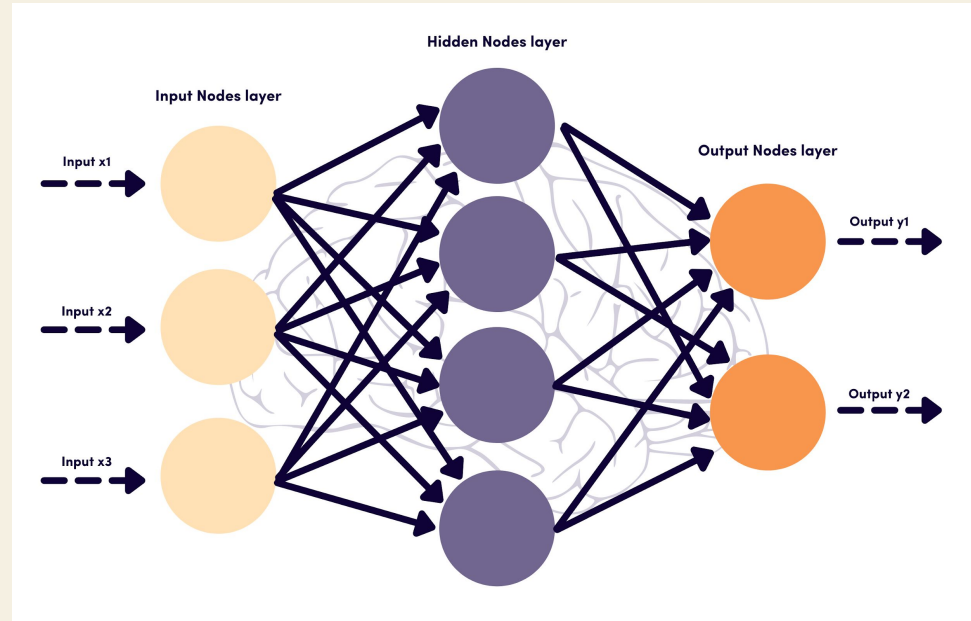


02. Engineering Research

Deep learning & Yolo Models

Deep Learning : subset of artificial intelligence where computers learn to recognize patterns and make decisions by processing large amounts of data through layers of simple decision-making steps.

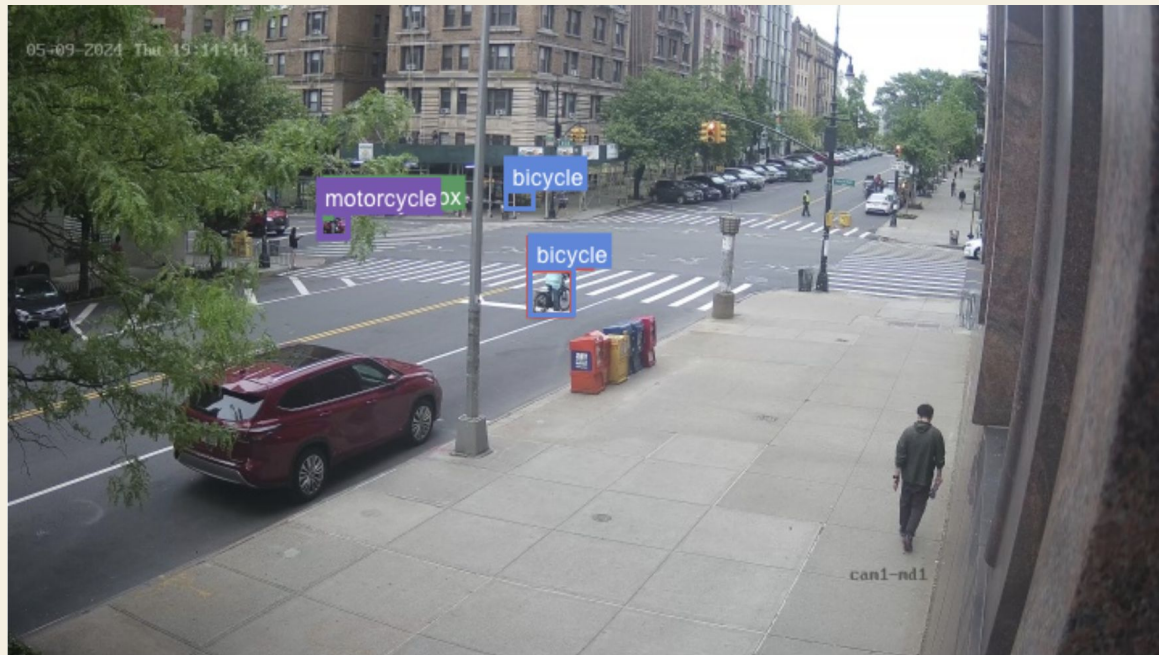
YOLO: a real-time object detection algorithm that uses a convolutional neural network (CNN) to predict bounding boxes and class probabilities for objects in an image.



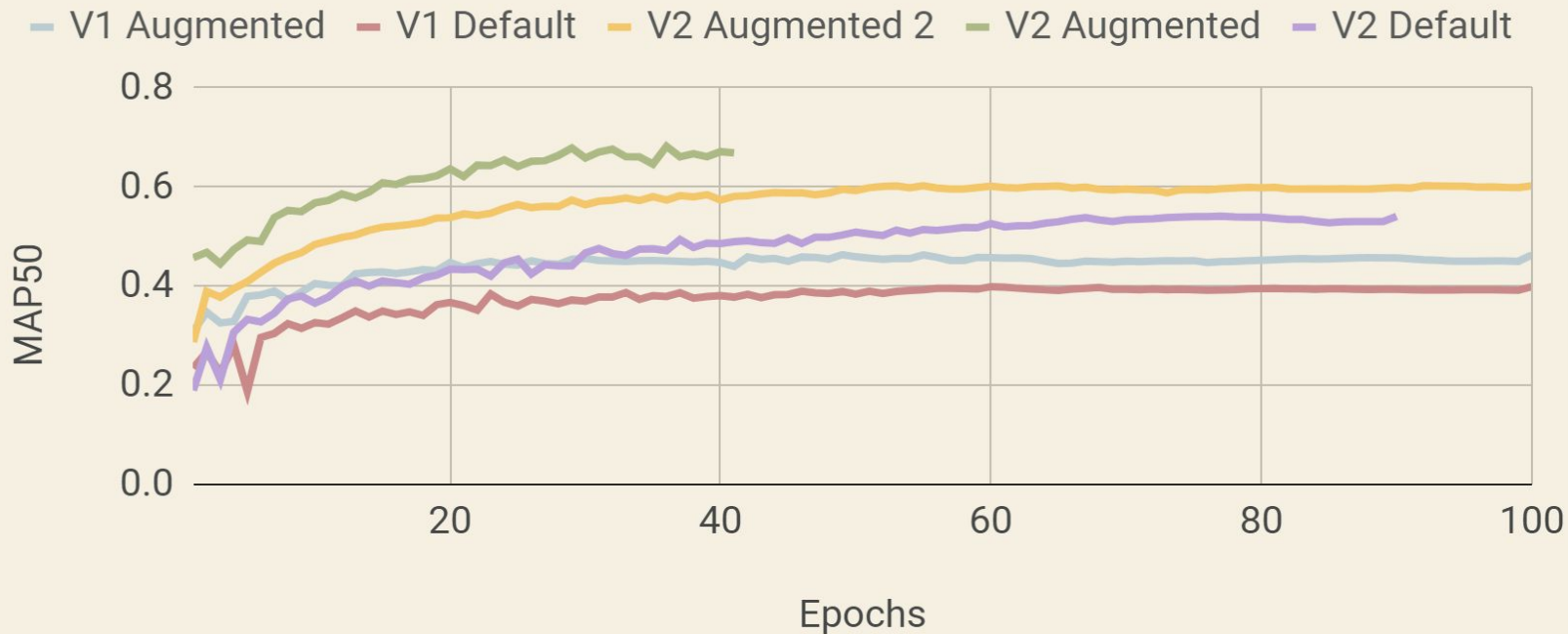
The Dataset

13,000 annotated images
sourced from the
intersection of 120th Street
and Amsterdam

- ❑ Bicycles
- ❑ E-Bicycles
- ❑ Scooters
- ❑ E-Scooters
- ❑ Motorcycles



Weights & Biases





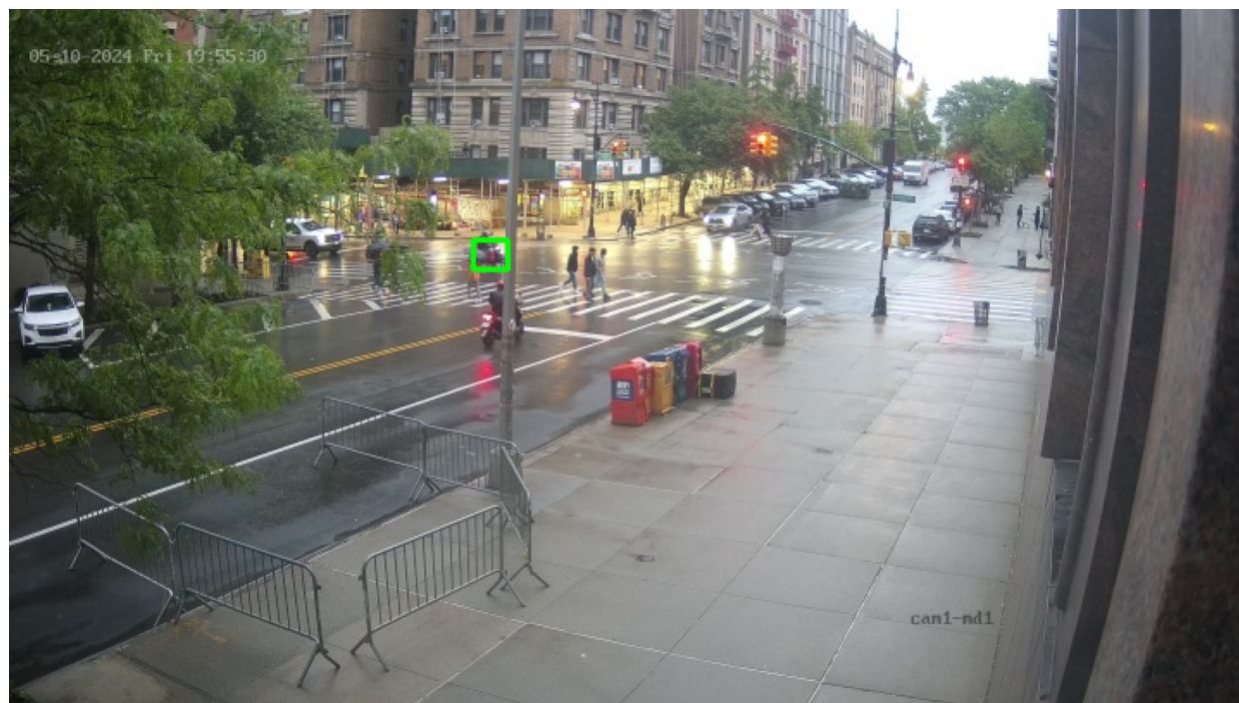
03. Connections and Applications

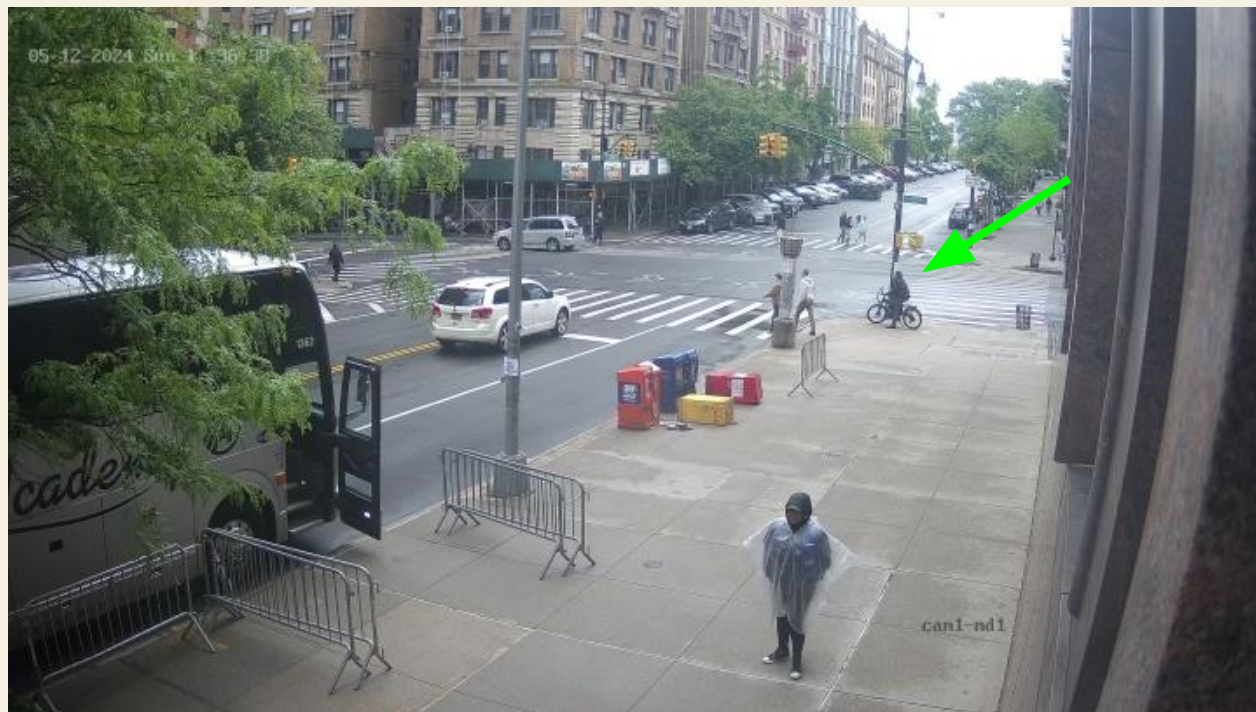








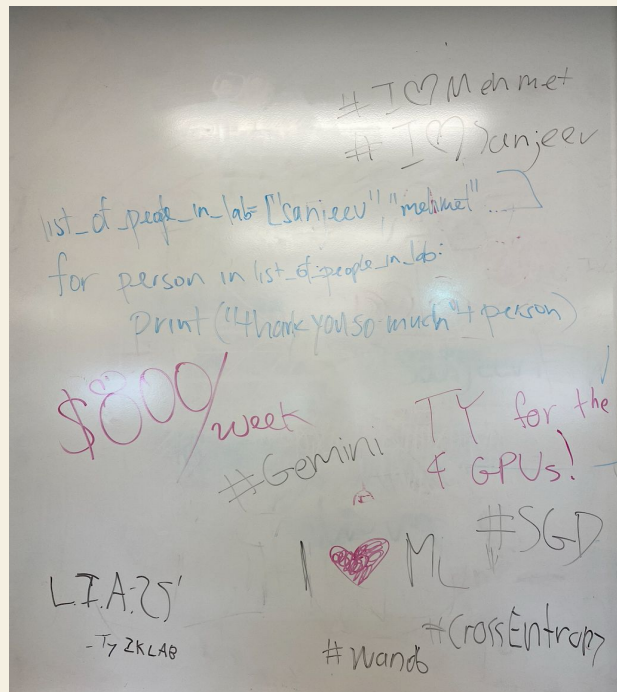








Acknowledgements



- ❖ Sanjeev Narasimhan
- ❖ Dr. Mehmet
- ❖ ZK Lab @ Columbia University
- ❖ Nicole Lum
- ❖ Cristian Capotescu
- ❖ All Faculty at Center For Smart Streetscapes
- ❖ HMart